

United States Ethnicity – Map Controls

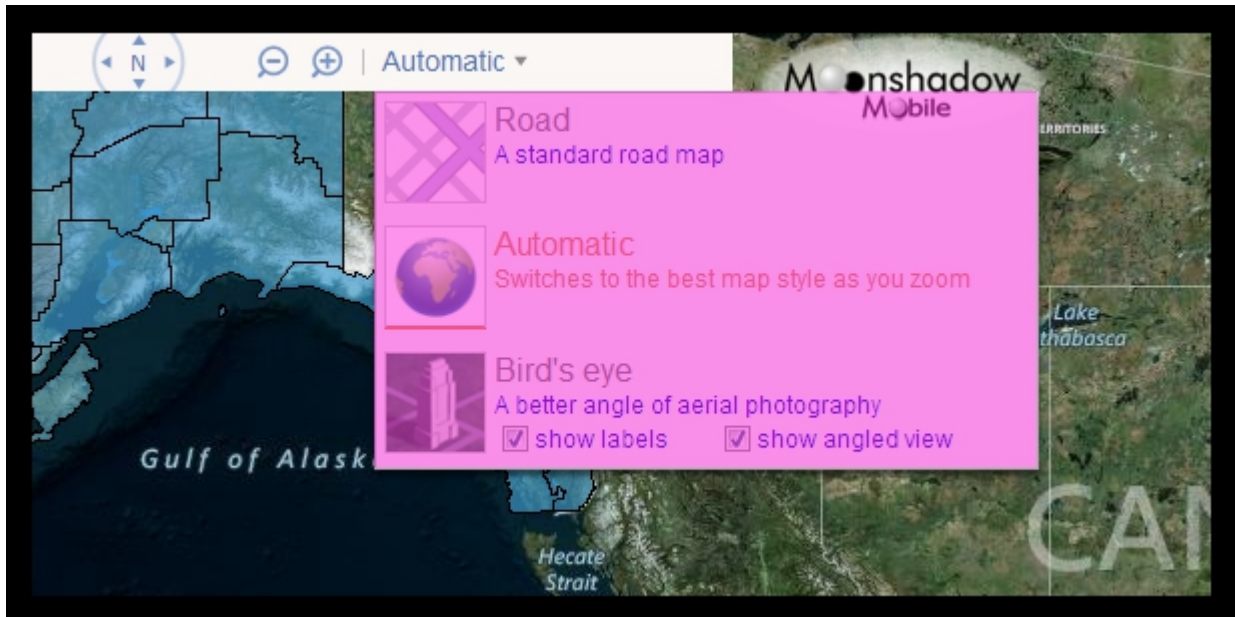
Setting the Map Type:

Map types change what kind of map is on display.
The United States Ethnicity map type will initially be set to Automatic.

1. Go to the map controls bar at the top left portion of the map.

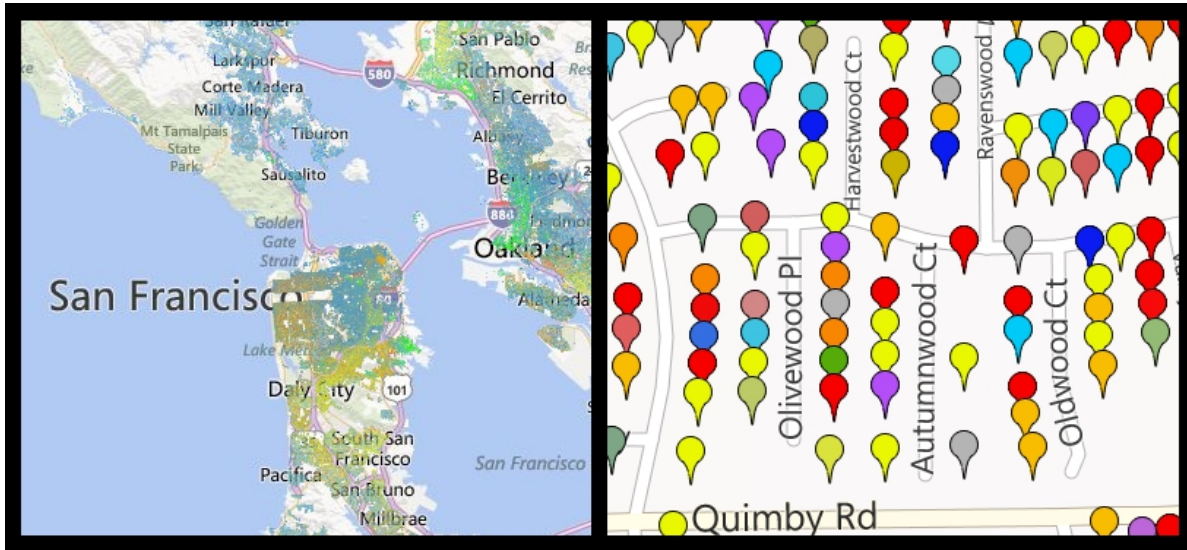


2. Hover over "Automatic" and a drop down menu will appear.

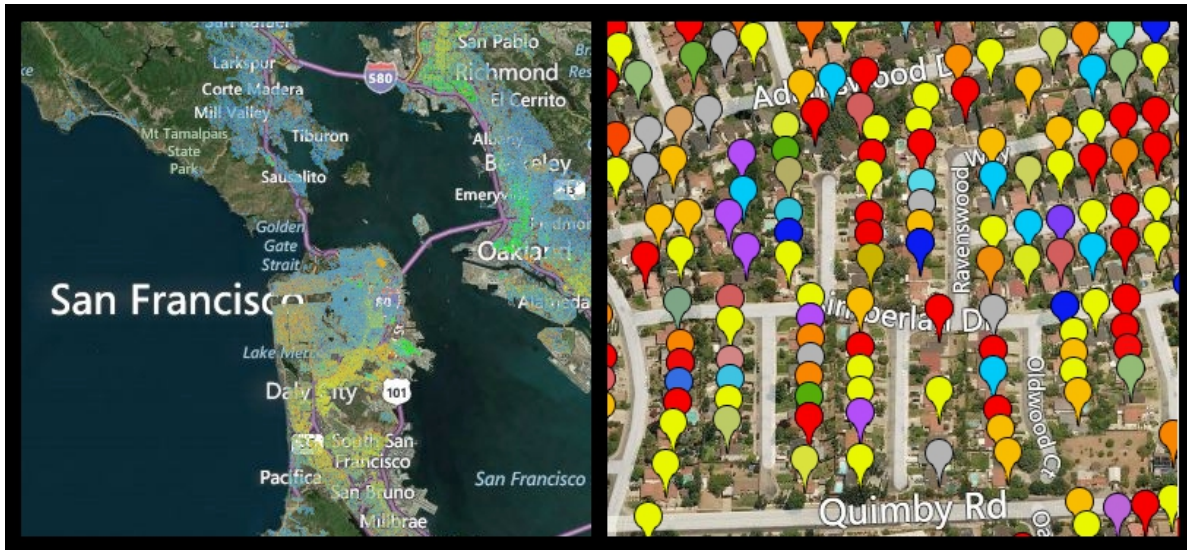


3. You will have three map types to choose from:

- Road: This map type displays roads, rivers and simple topographic features, like a standard map.



- Bird's Eye: The map will display as satellite images. When you zoom all the way in, the camera angle shifts so that you are looking down at a slight angle.



- Automatic: This map type will change to and from the Road and Bird's Eye map types depending on the zoom setting. When you are close up, it will show a satellite image, and when you are far away, it will show the standard road map.

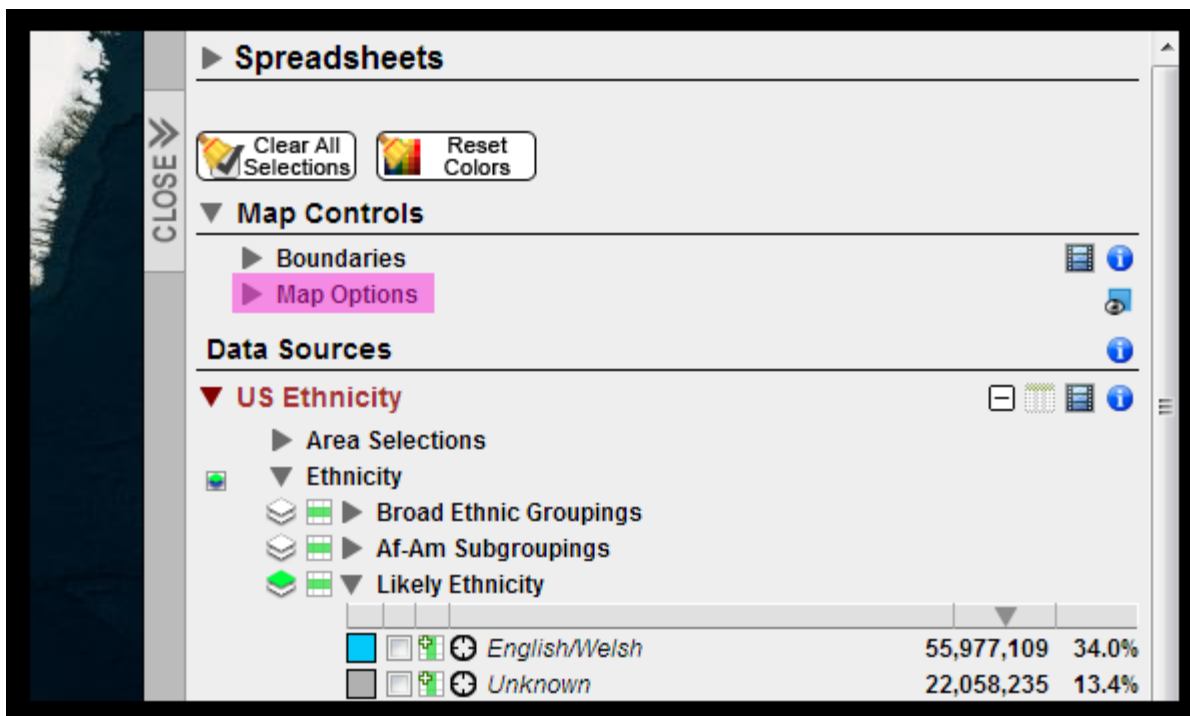
Setting the Count Scope:

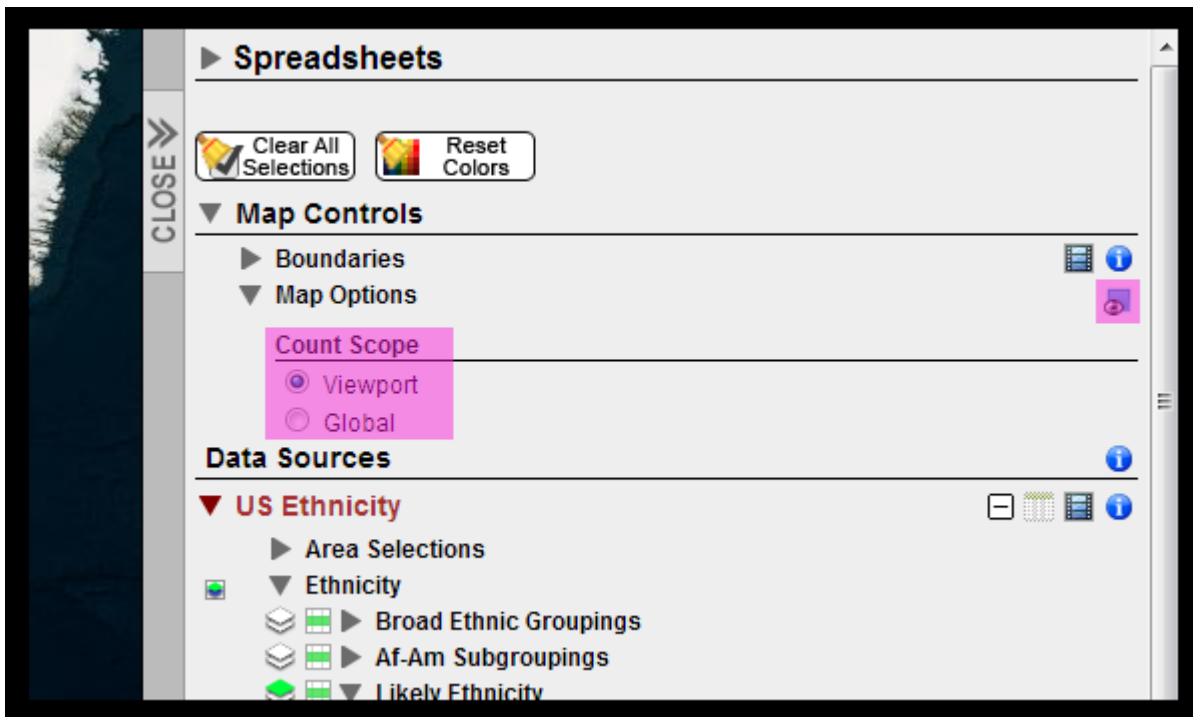
The Count Scope determines how the total number of Voters and Residences, located at the lower left corner of the map, are calculated.



The United States Ethnicity Count Scope will initially be set to Viewport.

1. Go to the Map Controls area with in the side panel and click on Map Options.





2. A drop down section will appear showing the Count Scope options:
 - Viewport: The Voters and Residences count, along with the voter counts within the sidebar, will reflect the voters that you can see within your map view.
 - Global: The Voters and Residences count, along with the voter counts within the sidebar, will reflect every voter that is currently displayed on the entire map.
3. Select your Count Scope by clicking on one of the radio buttons to the left of the options. The icon to the right of the Map Options will change to reflect your selection.

Viewport:



Global:

